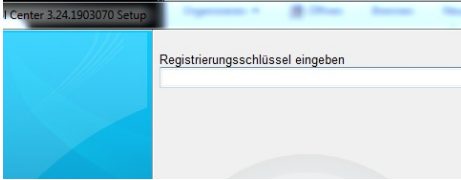


# Phoenix LIGHT

## 1. Installation of Phoenix LIGHT

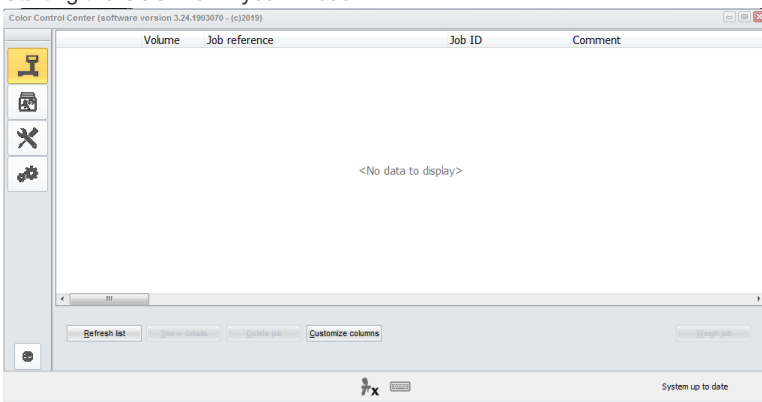
- Please download the latest CCC image (min. 3.24.) from Phoenix (Settings/My Account/Button"Import/Export/Downloads").
- Extract the image and start the installation.  
**PLEASE NOTE** If you use the full CCC version please uninstall it and reboot your PC.
- Enter the registration key INSTALL[DM]SHCLIGHT



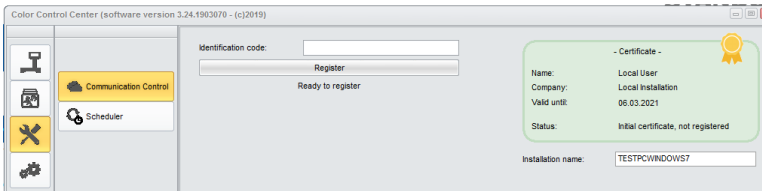
A brandless CCC light version will be installed.

## 2. First start and settings

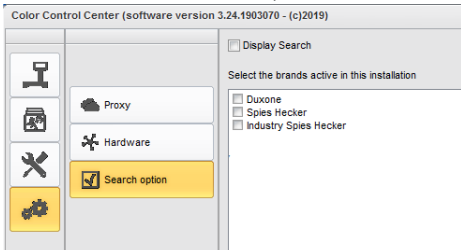
- Starting the CCC LIGHT you will see



- Please click the third icon (mouse over event "Maintenance") in the menu and then "Communication Control"



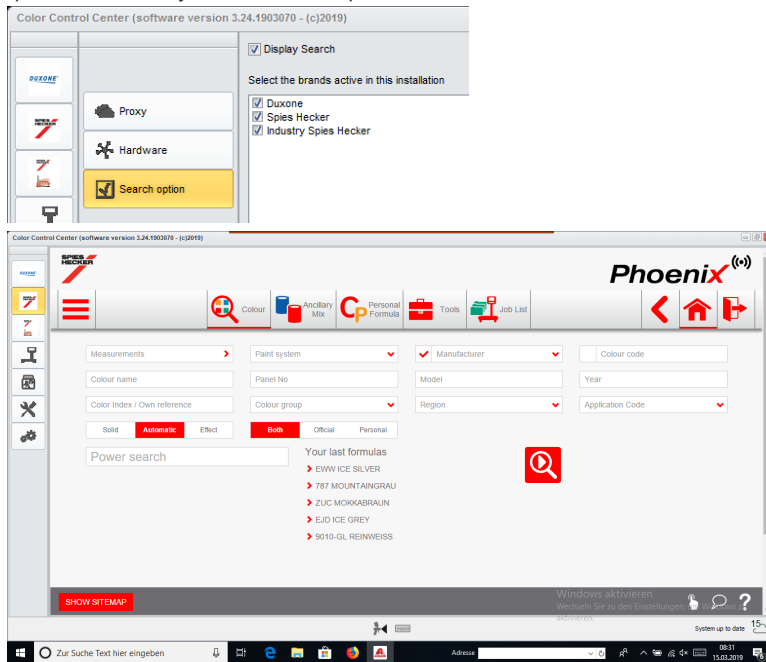
- Register your local installation.  
Please copy your identification code from Phoenix (Settings/My Account).  
After registration the local CCC takes over all brands that are configured in your profile/certificate.
- Please click the fourth icon (mouse over event "Configuration") in the menu and and then "Search option"



- Please choose the brand(s) you would like to see in the CCC LIGHT.
- Please click the button "Apply" to save the changes.

- On this setting window you can see the option "Display Search"

- If you checkmark the option "Display Search" you will get access to the online applications from all configured brands. The Job queue access stays as in the first option.



- If you do not checkmark the option "Display Search" you will get the Job queue multibranded showing jobs from all configured brands.

Volume	Paint System	Colour code	Manufacturer	Job reference	Job ID	License plate	Panel Ref.	Vars
<b>Priority: High</b>								
3.00	480 - PERMAHYD HI-TEC	EJD	PEUGEOT	201811071119	1Q1NFGPE84QD0		909026	
1.00	480 - PERMAHYD HI-TEC	EWV	PEUGEOT	201811071119	9P9DRPE9RTGK		943790	
1.00	480 - PERMAHYD HI-TEC	EWV	PEUGEOT	201811071119	8838DE9RTSE		918238	
1.00	480 - PERMAHYD HI-TEC	EWV	PEUGEOT	201811071119	H9BMPPE9RU4I		918238	
1.00	480 - PERMAHYD HI-TEC	EWV	PEUGEOT	201811071119	HN01LPE9RUFV		905364	
0.30	CLEARCOAT	3310		201811071119	M9VM4LE9RUP9		8045	
<b>Priority: Normal</b>								
5.00	250 - PERMAHYD BASISLACK	3002-GL	RAL	201806191509			003002	
0.20	480 - PERMAHYD HI-TEC	LA7C	VOLKSWAGEN	201809050950		MM20180905	944224	
1.00	480 - PERMAHYD HI-TEC	744	MERCEDES	201809050950		MM20180905	243259	
0.30	480 - PERMAHYD HI-TEC	744	MERCEDES	201809171442		KK2018	243259	
3.00	480 - PERMAHYD HI-TEC	EWV	PEUGEOT	201810301254	14HG8TE8QJET	MM2018	939455	
0.50	480 - PERMAHYD HI-TEC	744	MERCEDES	201811071119			243259	
1.00	480 - PERMAHYD HI-TEC	4W7	LEXUS	201811071119	47J160E11V52		896270	
1.00	480 - PERMAHYD HI-TEC	P62	MITSUBISHI	201811071119	MKEH3LE11V88		946907	
1.00	480 - PERMAHYD HI-TEC	EWV	PEUGEOT	20190315	323P09E8MHTG		918238	
3.00	480 - PERMAHYD HI-TEC	ZUC	OPEL/VAUXHALL	310M5789456			874650	
0.60	250 - PERMAHYD BASISLACK	3000-GL	RAL	ENR 2 CJ CURVE			003000	
1.00	DUXONE 2K TOPCOAT	3000-GL	RAL	UWB 1			12313	239633
1.00	DUXONE BASECOAT	N8N	HYUNDAI	UWB 3 MALTA			201707100729	938042
1.00	DUXONE BASECOAT	N8N	HYUNDAI	UWB 3 MALTA			201707100736	938042

- At first access to the online application the CCC LIGHT is asking for the access data, so please enter the user ID and password.

Auto login credentials

User name  
**User ID**

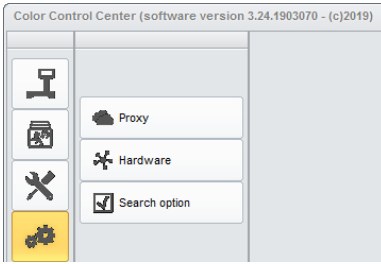
Password  
••••

Confirm password  
••••

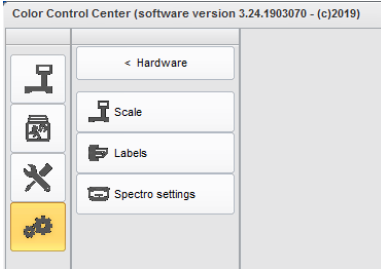
Cancel OK

### 3. Configuration of the local hardware

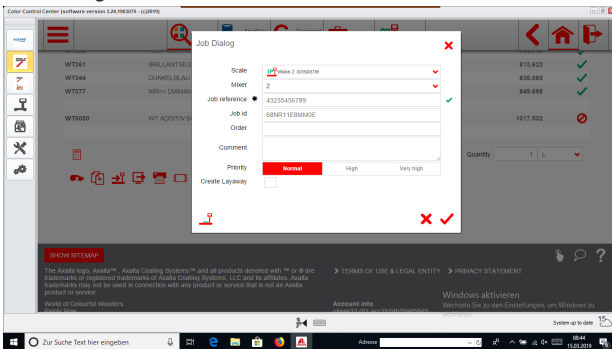
- Please click the fourth icon (mouse over event "Configuration") in the menu and then "Hardware"



- The configuration of hardware can be done in the same way as in the full version.



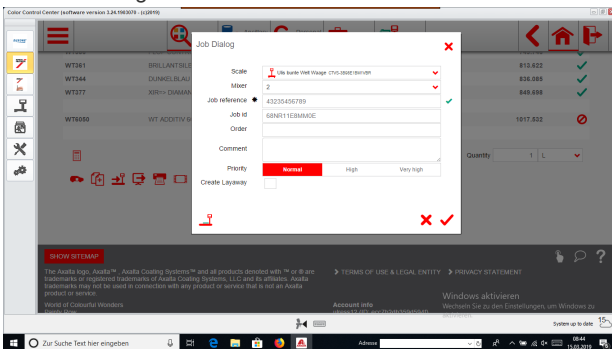
- The configured local scale is available in all active brands.



- The configured spectro is available in all brands for which the device is allowed to use.
- The configured label printer is available in all active brands.

### 4. Configuration of IP devices

- The IP scale and the Daisy Wheel have to be configured in the online/cloud applications. Both are available only for the brand for which thus are configured.



- The IP spectro device has to be configured in the online/cloud application. It is available only for the brand for which it is configured and allowed.

**Scheduler** Please set the scheduler to receive automatic software update.